

BARRÒCO

Follow the 4 infographics steps, compare with the size chart and buy the ideal shirt for you.

A CHEST

Lay the shirt flat with buttons fastened and measure 1 cm under the armhole. Measure from side to side and double the measurement across the chest.

B WAIST

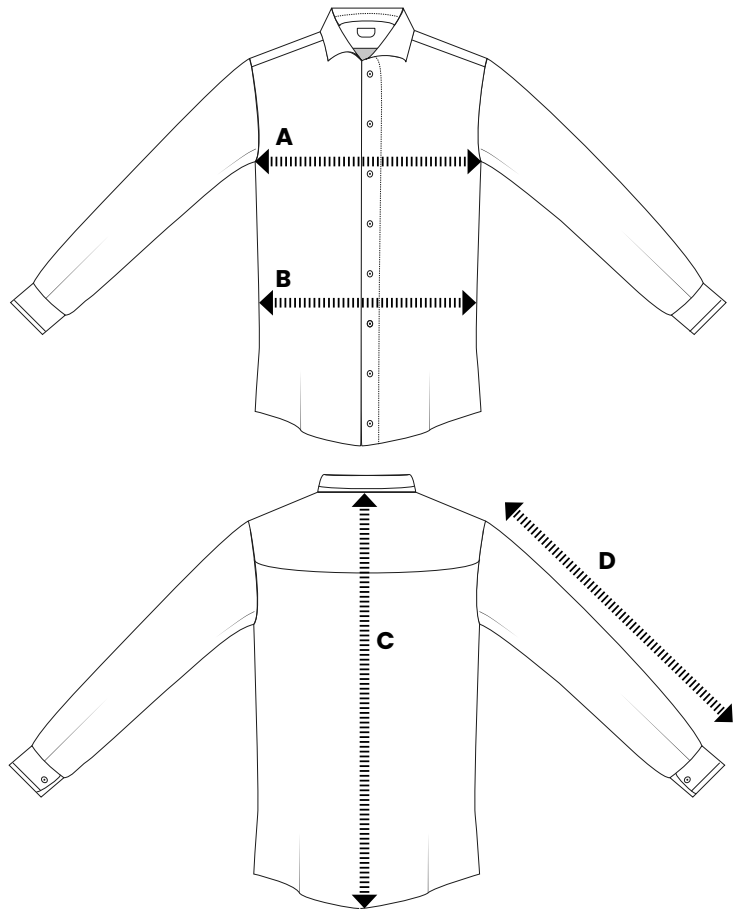
Lay the shirt flat with buttons fastened and measure from side to side and double the measurement across the waist. The waist is located at the slimmest part of the shirt.

C SHIRT LENGTH

Measure from center back down to the end of the hem.

D SLEEVE LENGTH

Measure from center back to the shoulder seam, then measure from the shoulder seam to the end of the cuff and combine these measurements.



Size EU	Size UK-US	A Chest	B Waist	C Shirt length	D Sleeve length	Shoulders	Wrist height
37	5-1	101	93	72,5	59	40	7
38	6-2	105	97	73,5	60	41,5	7
39	7-3	109	101	74,5	61	43	7
40	8-4	113	105	75,5	62	44,5	7
41	9-5	117	109	76,5	63	46	7
42	10-6	121	113	77,5	64	47,5	7
43	11-7	125	117	78,5	65	49	7
44	12-8	129	121	79,5	66	50,5	7
45	13-9	133	125	80,5	67	52	7
46	14-10	137	129	81,5	68	53,5	7
47	15-11	141	133	82,5	69	55	7

*The measurements in the size chart are in **centimeters**.

Dou you want make the garment on your measurements?

Provide the measurements using the **"notes"** box that you will find on the payment page. Our team will work with the artisans to make your custom-made garment, guaranteeing the return in 14 working days.